

Die Cut Handle Bags

(Additional Die Cuts featured on pages 108 and 109.)

7W X 10½H

2.5 mil.

Imprint	Item #	150	250	500	1000	3000
FLEKO INK PRINT	19FS710	1.38	0.88	0.74	0.68	0.62 A
DYNAMIC COLOR	DYFS710*	1.68	1.18	1.04	0.98	0.92 A

Shipping: 10 lbs. per box of 500

Imprint Area: Front/Back – 4W x 4H (Flexo Ink Print)
Front – 4W x 4H (Dynamic Color)

9½W X 12H

2.5 mil.

Imprint	Item #	150	250	500	1000	3000
FLEKO INK PRINT	19FS912	1.40	0.90	0.76	0.70	0.64 A
DYNAMIC COLOR	DYFS912*	1.70	1.20	1.06	1.00	0.94 A

Shipping: 14 lbs. per box of 500

Imprint Area: Front/Back – 6W x 6H (Flexo Ink Print)
Front – 6W x 6H (Dynamic Color)

Note: 8½" x 11" sheet of paper interferes with use of the die cut handles.

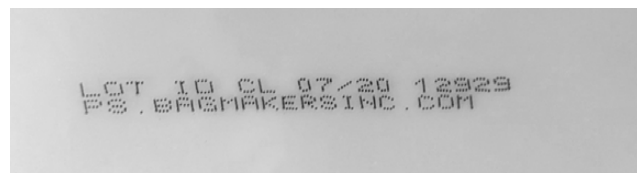
9½W X 14H

2.5 mil.

Imprint	Item #	150	250	500	1000	3000
FLEKO INK PRINT	19FS914	1.42	0.92	0.78	0.72	0.66 A
DYNAMIC COLOR	DYFS914*	1.72	1.22	1.08	1.02	0.96 A

Shipping: 17 lbs. per box of 500

Imprint Area: Front/Back – 6W x 8H (Flexo Ink Print)
Front – 6W x 6H (Dynamic Color)



Close-up of lot ID on back of every 7W x 10½H, 9½W x 12H, and 9½W x 14H Die Cut Handle Bag.

12W X 15H X 3

2.5 mil.

Imprint	Item #	150	250	500	1000	3000
FLEKO INK PRINT	19FS1215	1.56	1.06	0.92	0.86	0.80 A
DYNAMIC COLOR	DYFS1215*	1.86	1.36	1.22	1.16	1.10 A

Shipping: 21 lbs. per box of 500

Imprint Area: Front/Back – 8W x 8H (Flexo Ink Print)
Front – 8W x 7H (Dynamic Color)
NFL Required – 3.4W x 4.5H



Clear Only

15W X 19H X 3

2.5 mil.

Imprint	Item #	150	250	500	1000	3000
FLEKO INK PRINT	19FS1519	1.72	1.22	1.08	1.02	0.96 A
DYNAMIC COLOR	DYFS1519*	2.02	1.52	1.38	1.32	1.26 A

Shipping: 33 lbs. per box of 500

Imprint Area: Front/Back – 9W x 9H (Flexo Ink Print)
Front – 9W x 7H (Dynamic Color)

Bag Colors Available:



* Dynamic Color only available on Yellow, White, Clear, Pink, Lime, Buff, and Gray.
** Orange available in 12W x 15H x 3 size only.

	FLEKO INK PRINT	DYNAMIC COLOR
SET-UP	\$65 per color, per design (G).	\$55 per design (G).
RE-ORDER SET-UP	NO SET-UP CHARGE.	\$35 per design (G).
ADDITIONAL LOCATION	\$0.20 per bag (G).	N/A
ADDITIONAL COLOR <i>Additional color is not available for the 7W x 10½H Die Cut bag.</i>	\$0.20 per color, per side, per bag (G).	N/A
PRODUCTION TIME <i>Orders with more than 3,000 impressions will require extra production time.</i>	4 business days after all final approvals.	8 business days after all final approvals.
COLUMN PRICING	Per bag, one-color imprint, one location. Plate charge is additional.	Per bag, multi-color imprint, one side. Set-up charge is additional.
PLAIN BAGS	20% off Flexo Ink Print bag price. Ships next business day.	
BROKEN BOX CHARGE	\$10 (G) – Plain bags only.	
ART SPECS/IMPRINT COLORS	Refer to pages 206-209, 211.	
RUSHES & ADDITIONAL SERVICES	Refer to pages 206-208, 213.	

Die Cut Handle Bags

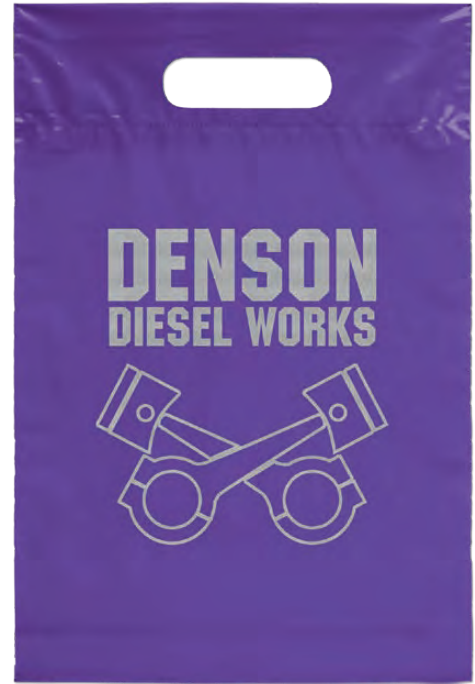


These 2.5 mil lo-density plastic bags feature fold-over reinforced die cut handles. Bottom gusset is available on select sizes.



7W x 10½H **DYNAMIC COLOR**

9½W x 12H **FLEKO INK PRINT**



9½W x 14H **FLEKO INK PRINT**
Holds letter-size paper, flyers, and catalogs.



15W x 19H x 3 **FLEKO INK PRINT**



12W x 15H x 3 **FLEKO INK PRINT**
**Orange available in 12W x 15H x 3 size only.